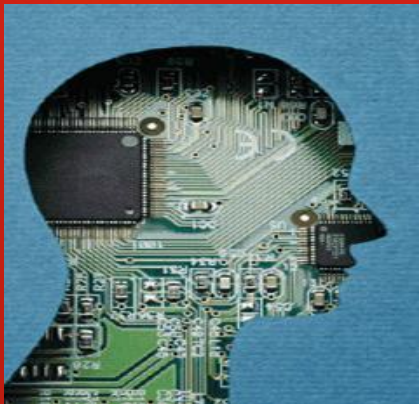


BAYLOR SCOTT & WHITE HEALTH E-RESEARCH & EBP NEWSLETTER



Embracing the Future: A Virtual Research and EBP Nursing Summit

The North and Central Texas Nursing Research Councils would like to thank all who participated in the Embracing the Future: A Virtual Research and EBP Nursing Summit held June 1-30, 2015. This innovative internet based summit included 38 presentations featuring completed evidence based/nursing research projects from both the North and Central Texas Regions. There were a total 1,215 course accessed and 523 continuing nursing education hours awarded.

The top three presenters as determined by popular vote by the summit attendees are:

- Alaina Tellson, BSN, RN-BC, NE-BC, *Randomized Control Trial Assessing the Efficacy of CPT Compression on Obese and Morbidly Obese Adult Simulation Mankins and Given Rescuer Characteristics* from THHP
- Melissa Angel, MSN, RN, FNP, *The Effects of a Well-Functioning Rapid Response Team on Decreasing Cardiac Arrest Rates and Improving 30-Day Outcomes on Codes Outside Critical Care Areas* from Memorial Hospital Temple
- Tony Woodard, MSN, RN, CNS, & Laurie Herzer, MPH, BSN, RN, OCN®, *Nursing Students' and Nursing Staff's Perceptions of Nursing Students' Clinical Experience* from Memorial Hospital, Temple.

The attendee winners of the raffled iPad Air 2 are:

- Crystal Gibbs
- Michelle Speicher
- Elizabeth Kiesle

The modules from the Summit are still available for viewing at.

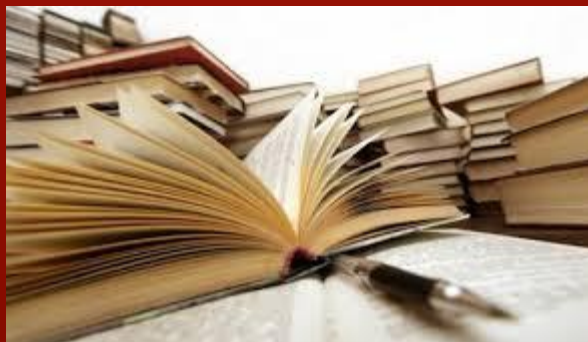
bhcsclip.org

4th Annual Nursing Research Question Contest

The 4th Annual Nursing Research Question contest will be occurring this fall. Nurses at all levels from both the North and Central Regions are invited to submit their research questions between October 19 and November 19, 2015. It is expected there will be a Central Texas and a North Texas winner in a blinded review process and both will receive prizes.

For more information or to submit a question please contact:

- Phyllis Hart Tipton, PhD, RN at phtipton@sw.org or 254-724-4764
- D 'Ann Orr, MSN, RN at dorr@sw.org or 254-724-4673
- Theresa Kaplan at TheresKa@BaylorHealth.edu or 972-394-2318.



Celebrations



Christy Walker (Montalvo), MSN, RN, FNP and Linda Tjong, MSN, DBA, RN, NE-BC presented the results of the “Relationships between Opposite Strength Patterns and Risk for Burnout” that was conducted at Baylor Medical Center at McKinney. They presented at Oschner Health System & LSU health in New Orleans.

One article authored by NTX nurses has been published:

“Trauma Patient Readmissions: Why do they come back for more?” written by Laura Bruce Petrey; Rebecca Joanne Weddle; Bradford Richardson; Richard Gilder; Megan Reynolds; Monica Bennett; Alan Cook; Michael Foreman, and Ann Marie Warren was published in the November 2015 issue of *Trauma and Acute Care Surgery*

Two articles authored by CTX nurses have been published:

“After Hours Critical Lab Reporting: Streamlining the Process” written by Debora Preputnik RN and Phyllis Hart Tipton PhD, RN was published in the July/August 2015 issue of *Viewpoint*.

“Breastfeeding Outcomes Following Bariatric Surgery” written by Patty Caplinger, BSN, RN, IBCLC, RLC; Ann T. Cooney, MSN, RNC, CNS; Christy Bledsoe, MSN, RN; Patricia Hagan, BSN, RNC, IBCLC, RLC; Audra Smith, RN; Paulette Whitfield, PhD, RN, ANP, CNP; Elizabeth Goodridge, MSN, RN, CNE; JuHee Song, PhD, and Phyllis Hart Tipton, PhD, RN was published in the November 2015 issue of *Clinical Lactation*.

Evidence Based Practice Fellows 2014-2015

Congratulations to our new Evidence Based Practice Fellows who graduated from the Texas Christian University EBP fellowship program. Thank you for your hard work and contribution to grounding nursing practice in evidence.

*Kim Acosta
Colyn Barry
Herbert Bautista
Njomgang Dijinigou
Binsey Easlow
Becky Gilbert
Courtney Golden
Katrina Hill
Myra Johnson
Jeannette Mastrovich
Martha Megginson
Gustavo Ortiz
Percival Paclibar
Daria Panahy
Beth Prosser
Shaila Sharma
Meredith Wilkerson*



BAYLOR SCOTT & WHITE HEALTH NORTH

DIVISION NRC APPROVED STUDIES

July- September 2015

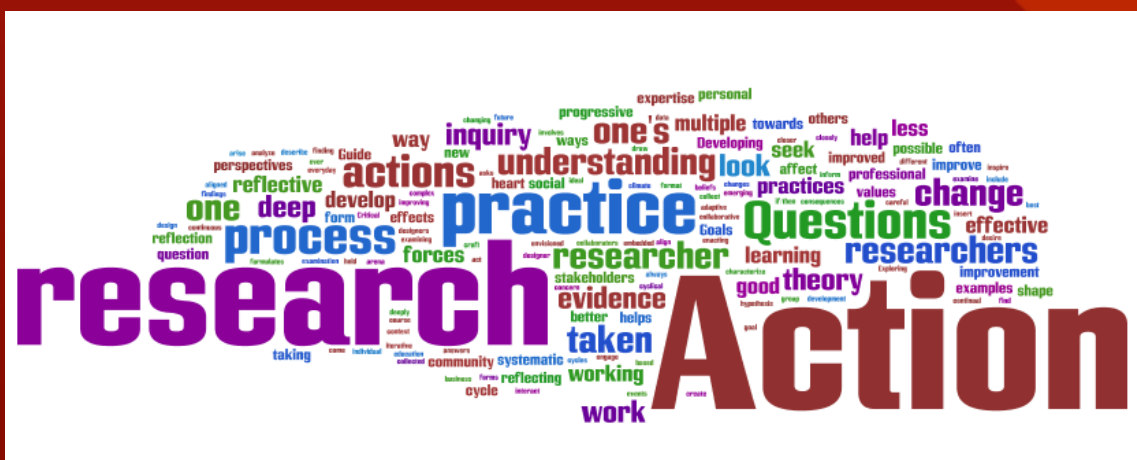
- The Relationship Between Nursing Specialty Certification and Surgical Site Infection Rates
 PI: Alaina Tellson, BSN, RN, NE-BC
 Co-Investigator: MG Leveille, PhD, RN, ACNP
- Development of a Tool to Measure Factors Affecting Breastfeeding among Mothers in the NICU
 PI: Maria Laarnie Aquino, BSN, RN-NIC
 Co-Investigator: Azenith Torres, BSN, RN-NIC
 Co-Investigator: Shanita Lofton, BSN, CCRN
- Measuring Interventions for Meaningful Recognition and Skilled Communication using the Healthy Work Environment Scale for Direct Care Nurses in Acute Care Settings #10
 PI: Penny Huddleston, PhD, RN, CCRN
- Measuring Interventions for Meaningful Recognition and Skilled Communication using the Healthy Work Environment Scale for Direct Care Nurses in Acute Care Settings #11
 PI: Penny Huddleston, PhD, RN, CCRN
- RN Perceptions of Co-worker Incivility and Collective Efficacy as Influential to Hospital Structures and Outcomes (dissertation)
 PI: Jessica Smith, PhD
- Evaluation of Prenatal Breastfeeding Education in a Clinic Setting
 PI: Becky Spencer, PhD, RN, IBCLC
 Co-Investigator: Kathy Chaney-Padak, MSN, RN, IBCLC
 Co-Investigator: Kathleen Ellis PhD, RN
- Team Support: Help When You Need it! #3
 PI: Penny Huddleston, PhD, RN, CCRN
 Co-Investigator: Amanda Smith, MSN, RN, OCN, CMSRN
- Practice Change to Reduce Cardiac Monitor Alarms
 PI: Shannan Berrier, BSN, RN, PCCN
 Co-Investigator: Linda Tjong, MSN, RN, DBA, NE-BC
- Informal Leadership: A Study on the Impact of Leadership Attributes on Patient Satisfaction in Acute Care Hospitals
 PI: Doug Lawson, MS



BAYLOR SCOTT & WHITE HEALTH CENTRAL DIVISION APPROVED STUDIES

July- September 2015

- Examining Outcomes of Low Birth Weight Infants Participating in Infant Follow Up
PI: Martha Hemingway, DNP, RN
- Measuring Direct Care Nurses' and Nurse Leaders' Perceptions of a Healthy Work Environment Within Acute Care Settings
PI: Penny Huddleston, PhD, RN, CCRN
- Informal Leadership: A Study on the Impact of Leadership Attributes on Patient Satisfaction in Acute Care Hospitals
PI: Doug Lawson, MS
- Improving New Graduate Registered Nurses' Transition to Practice: Development of a Nurse Residency Program
PI: Laurel Pilkington, MSN, RN
- Newborn Education Project
PI: Anna Dick, RN



Funding News & Grant Tips

Funding News and Grant Tips:

<http://www.dshs.state.tx.us/fic/al26-9-4.aspx#A>

<http://www.dshs.state.tx.us/fic/al26-9-4.aspx#B>

<http://www.dshs.state.tx.us/fic/al26-9-4.aspx#A>

<http://www.dshs.state.tx.us/fic/al26-9-4.aspx#B>

<http://www.dshs.state.tx.us/fic/al26-9-4.aspx#C>

Private Funding Opportunities:

<http://www.dshs.state.tx.us/fic/al26-9-4.aspx#O>

<http://www.dshs.state.tx.us/fic/al26-9-4.aspx#Q>

<http://www.dshs.state.tx.us/fic/al26-9-4.aspx#R>

<http://www.dshs.state.tx.us/fic/al26-9-4.aspx#S>

Public Funding Opportunities:

<http://www.dshs.state.tx.us/fic/al26-9-4.aspx#D>

<http://www.dshs.state.tx.us/fic/al26-9-4.aspx#E>

<http://www.dshs.state.tx.us/fic/al26-9-4.aspx#G>

<http://www.dshs.state.tx.us/fic/al26-9-4.aspx#I>

<http://www.dshs.state.tx.us/fic/al26-9-4.aspx#J>

<http://www.dshs.state.tx.us/fic/al26-9-4.aspx#K>

<http://www.dshs.state.tx.us/fic/al26-9-4.aspx#L>

<http://www.dshs.state.tx.us/fic/al26-9-4.aspx#M>

Research Grant Opportunities / Nursing Events and Conferences

Research Grant Opportunities

<http://www.nursingsociety.org/Awards/Pages/awards.aspx>

Nursing Events and Conferences:

<http://www.nursingsociety.org/connect-engage/meetings-events/nursing-conferences>

<http://convention.nursingsociety.org/>

<http://www.namcp.org/conferences/fmcf/15/info.htm>

<https://encuentros.isciii.es/cuenca2015/en/index.html>

<http://www.care4nurses.org/>

<http://nursing-congress.conferencefederation.com/>

<http://www.uta.edu/nursing/hispanic/travel-study-learn/>

Baylor Scott & White Health Nursing Research Contacts

Susan Houston PhD, RN, FAAN, NEA-BC
Director of Baylor Scott & White Health Nursing
Research –North Texas
Corporate Office of the CNO
2001 Bryan St. Ste. 600
Dallas, TX 75201
Cell: 972-272-9012
Email: Susan.Houston@Baylorhealth.edu

Phyllis Hart Tipton, PhD, RN
Research Associate
Nursing Professional Development
Baylor Scott & White Health- Central Texas
MS-26-A431
2401 S. 31st St.
Temple, TX 76508
Ph.: 254-724-4764
Fax: 254-724-4166
Email: Phtipton@sw.org



Kristie Johnson
Administrative Assistant
Corporate Office of the CNO-North Texas
2001 Bryan St. Ste. 600
Dallas, TX 75201
Ph.: 214-820-9675
Fax: 214-820-4170
Email: Kristie.Johnson@BaylorHealth.edu