

Baylor Scott & White E-Research & EBP Newsletter

Research Week 2016 is the Third Annual celebration of Baylor Scott & White Health's medical innovation efforts. The theme of this year's event, which featured a kickoff carnival, daily scientific talks and activity booths at 15 locations, was "We've got the power to advance medicine."

Nursing Research took the opportunity to join in on the fun and disseminate information regarding Nursing research activities. Nursing Research sponsored a booth at Baylor University Medical Center and enjoyed walking the halls of various facilities to celebrate research and provide giveaways.



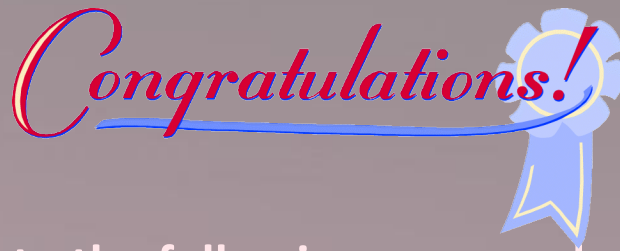
Employees enjoying the
Baylor Research Institute
Carnival

Pictured below are:
Jennifer Stone (CTX), PhD
Ruth Robert (NTX), PhD, RN, MSN, FNP-C,
CMSRN, PCCN
and Kelly Webster (NTX)



Celebrations

Congratulations to Dr. Alaina Tellson for defending her dissertation on April 8, 2016



Congratulations to the following nurses who presented their posters at the Southern Nursing Research Society Conference.

**Dr. Penny Huddleston, Dr. Mary Mancini, Jennifer Gray,
and Beth Ulrich**

“Measuring the Direct Care Nurses' and Nurse Leaders' Perceptions of a Healthy Work Environment in Acute Care Hospital Settings.”

Dr. Susan Houston, Dr. Mary Mancini, Dr. Yan Xiao, Louann Cole, Dr. Penny Huddleston, and Nancy Smith

“The Impact of Serious Gaming on Nurse and Physician Behavior, Attitudes and Knowledge of Effective Inter-professional Communication.”

Dr. Ruth Roberts, Louann Cole, Dr. Susan Houston, Dr. Kathleen Ellis, Richard Gilder, Huanying Qin

“Comparing Two Educational Interventions on Geriatric Nursing Knowledge, Confidence, and Nurses' Perception in Providing Care for the Elderly.”

Dr. Kathleen Ellis

“Abuse and Pregnancy: Exploring Factors that May Contribute to Birthweight Disparities.”

Celebrations Continued...

Congratulations to the following individuals for their acceptance of abstracts to various conference:

The research team of Phyllis Hart Tipton, PhD, RN, D'Ann Orr, MSN, RN, CCRP, CHTS-CP; Margaret Prydun, PhD, RN, CNE, Pamela Sanford, MSN, RN-BC, CNS, & Richard Gilder, BSN, MS, RN-BC, CNOR had a poster presentation of their research project, "Nursing Students' Experience with Online, Face-to-Face, and Hybrid Teaching Modalities at the Southern Nursing Research Society Convention in Williamsburg, VA in February.

There were three nursing research projects featured at the 10th Annual Health Research Forum, Family Health Center, Waco, TX on April 12, 2016

Enhancing Nurse-Provider Communication:

Lizzie Kiesle, BSN, RN (PI): Team Jessica Pruszynski, PhD, Gregory Applegate, NS, and Phyllis Hart Tipton, PhD, RN

Crafting a Nursing Students' Optimal Clinical Rotation in the Emergency Department

Tony Woodard, MSN, RN, CNS, (PI): Team: Laurie Herzer, MPH, BSN, RN, OCN, Richard Gilder, BSN, MS, RN-BC, CNOR, and Phyllis Hart Tipton, PhD, RN

Nursing Students' Experience with Online, Face-to-Face, and Hybrid Teaching Modalities

Phyllis Hart Tipton, PhD, RN (PI): Team: D'Ann Orr, MSN, RN, CCRP, CHTS-CP; Margaret Prydun, PhD, RN, CEN, Pamela Sanford, MSN, RN-BC, and Richard Gilder, BSN, MS, RN-BC, CNOR

Time to make a change?

Your ideas could change work environment and patient care!
All nurses are invited to submit a research idea to the

5th Annual **Endowed Nursing Research Fund** **Call for Abstracts**

for a chance to win **\$1000** to study your idea in the form of research
and bragging rights for your facility!!!

No skills, no experience, no worries. Nursing Research Council
members are ready to help you write an abstract.

Submission Deadline: **May 2, 2016**

This event is sponsored by the CTX & NTX Nursing Research Councils.

For more information, guidelines, and assistance in writing your abstract,
please contact one of our research members listed below.

D'Ann Orr, MSN, RN
254-724-4673
DAnn.Orr@BSWHealth.org

Phyllis Hart Tipton, PhD, RN
254-724-4764
Phyllis.Tipton@BSWHealth.org

Susan Houston, PhD, RN
214-820-9118
Susan.Houston@BSWHealth.org

TCU EBP Fellowship Abstract

Congratulations to all of last year's TCU EBP Fellowship graduates! Highlighted below are 3 of the graduates' abstracts.

“ Admit Patients, Not Defeat: Implementing an Admission Nurse to Increase Nursing Satisfaction with the Admission Process”

Katrina Hill, BSN, RN, ONC

With an emphasis on decreasing the average length of stay, hospitals have high patient turnover rates. Often, surgical procedures require one night's stay in the hospital, resulting in extra work to move the patients in and out in a timely manner. This negatively affects the workload and increases the stress levels of the nurses who are constantly discharging and admitting patients.

The processes of admission and discharge require additional documentation along with specialized education directed towards patients and families. The admission process can take anywhere from 6 minutes to over 3 hours to complete causing the nurse to stay late after their shift. The literature shows that an admission nurse helps alleviate the work of the staff nurses and decreases incremental overtime. It indicates that the money saved through decreasing incremental overtime is enough to pay the salary of a full-time admission nurse, therefore, not costing any extra.

This project implemented an admission nurse pilot process for two medical-surgical floors over a 12 week period. The results showed increases in overall nursing satisfaction and in satisfaction with the admission process. Nurses were less stressed about getting admissions, and incremental overtime decreased per nurse per day for both floors. This increased satisfaction could lead to lower staff turnover rates, therefore saving money on new employee orientation and training. Less incremental overtime also saves the institution money. It is recommended to implement a hospital wide admission nurse, or several, to increase nursing satisfaction, decrease stress levels, and decrease incremental overtime.

TCU EBP Fellowship Abstract

Using a structured preoperative teaching tool to empower patients and prepare them for their postoperative course and home care.

Binsy Easow, BSN, RN, CCRN

Background

To improve patient's understanding on their postoperative course and home-care instructions, our team transitioned from random preoperative teaching to a structured preoperative teaching tool on the day of surgery.

PICO Question

Will a structured preoperative teaching program on the day of surgery in the ambulatory surgery unit lead to improved patient's perception of adequate information of their postoperative course and home-care as compared to the current practice of patient's receiving information at the time of discharge?

Evidence

Marge et al (2011) stated that patients who received preoperative education felt well-prepared for surgery. Wong et al (2010) improved the patient's perception of the postsurgical experience by providing preoperative teaching.

Methods

A comparison study was made using three sets of pre-intervention and post-intervention data. Nurse's perception on the importance and need for preoperative teaching, patient feedback, and patient satisfaction scores were compared before and after the intervention.

Intervention

The Day Surgery nurses and Pre-Admit team were educated using a structured preoperative teaching tool. Through poster presentations, ideas and feedback was discussed at shift change huddles. Printed materials about the surgery, home-care, and post-anesthesia care were given to patients during their waiting time before surgery.

Results

Patient feedback survey and nurse's perception of the importance for preoperative teaching improved; however there was no significant improvement in the patient satisfaction. Data was collected over six months.

Recommendations

Include the structured preoperative teaching tool in orientation for new hires and on yearly competencies to maintain consistency.

ICU EBP Fellowship Abstract

Continuous Lateral Rotation Therapy COURTNEY GOLDEN, BSN, RN, CCRN, MSW

Problem

Currently there is no set educational piece or protocol for Continuous Lateral Rotation Therapy implementation for patients in an 18 bed cardiac/medicine ICU.

Clinical question addressed

A standardized education tool for CLRT was used to assess nurse knowledge and comfort in regards to using rotation therapy in everyday practice. Nurses in the medicine/coronary ICU completed the same survey prior to and following education with the standardized tool. This provided insight as to whether or not they had obtained adequate knowledge to comfortably identify appropriate patients and implement CLRT.

Evidence

A comprehensive literature search reveals that using set criteria to identify Continuous Lateral Rotation Therapy appropriate patients reduces the number of days on the ventilator and length of stay in the ICU. Research also suggests that education of critical nurses is crucial to an effective use of the CLRT protocol.

Implementation

Using the IOWA model, previously designed criteria and a multidisciplinary team, an education piece was developed and evaluated for CLRT in critical care units.

Results

When nurses were appropriately educated on Continuous Lateral Rotation Therapy their level of comfort and confidence in implementing rotation therapy increased substantially.

Importance

With adequate educational tools available, a protocol can be developed in order to take this to the next level of implementation.

Recommendations

It is recommended that a protocol be developed and approved by critical care physicians. Once approved, education can begin hospital wide, allowing critical care nurses to have access to the educational piece as well as the protocol.

Baylor Scott and White Health North and Central Division NRC Approved Studies

NTX Approved Studies

- **Impact of an Evidence-Based and Comprehensive Teamwork Training System on Interprofessional Team Collaboration**
PI: Alaina Tellson, BSN, RN-BC, PhD Candidate, NE-BC
Co-Investigator(s): Eileen Flanagan, MSN, RN-BC
- **Knowledge and Attitudes of Maternal/Child Nurses towards Intimate Partner Violence**
PI: Kathleen Ellis, PhD, RN
- **Readiness for Practice: Transitioning with Human Patient Simulation**
PI: Kelly L. Rossler, PhD, RN, CHSE
Co-Investigator(s): Katherine Hardin, MSN, RN-BC
- **Cognitive, Emotional, and Behaviors Factors Associated with Treatment Delay for Acute Ischemic Stroke**
Primary Investigator: Claudia C. Beal PhD, RN
Co-Investigator(s): Kathleen Fedyszen MSN, RN-BC, ACNS-BC, CNRN, SCRN,
and Leigh Allen, MSN, RN, CCRN, CNRN

CTX Approved Studies

- **Program Evaluation: Camp Wheeze Away**
PI: Stacie Walker-Posvar
- **Lifestyle Counseling in Obese Populations**
PI: Katie Pakzad
- **Indicators of Patients/Parents' Satisfaction with Care Provided at a Pediatric Emergency Department**
PI: James Cain
- **Knowledge and Perceptions of Maternal/Child Nurses Towards Intimate Partner Violence:**
PI: Kathleen Ellis
- **Investigation of Infection Risk of Gel Nail Polish Wear for Healthcare Workers**
PI: Lisa Bailey and Phyllis Hart Tipton

Nursing Events and Conferences

12th Annual Nursing Research Conference:

Transforming Nursing Practice through Research and Dissemination

http://my.clevelandclinic.org/services/nursing-institute/conference-continuing-education/nursing-research?utm_campaign=nursingresearch-url&utm_medium=offline&utm_source=redirect

7th Annual Pediatric Nursing Conference: Through the Eyes of a Child and Their Family

<http://www.chp.edu/health-care-professionals/cme/other-cme/nursing-conference#sthash.9wJpO2kr.dpuf>

NTI 2016, AACN's National Teaching Institute & Critical-Care Exposition

http://www.aacn.org/dm/nti/ntihome.aspx?selnti=nti2016&menu=nti2016&lastmenu=divheader_past_and_future_ntis

APNA 14th Annual Clinical Psychopharmacology Institute Planned for Nurses by Nurses

<http://www.apna.org/i4a/pages/index.cfm?pageid=3545#sthash.wg8J9Clw.dpuf>

H.A.N.A 5th annual leadership convention

<http://hanainc.org/convention/>

Nuts & Bolts for Nurse Educators

<http://nursetim.com/nutsandbolts/>

27th Annual Nursing Research Congress

<http://congress.nursingsociety.org/>

Funding Opportunities

Public Funding Opportunities

- <http://grants.nih.gov/grants/guide/pa-files/PA-14-290.html>
- <http://grants.nih.gov/grants/guide/pa-files/PA-14-291.html>
- <http://grants.nih.gov/grants/guide/pa-files/PA-15-147.html>
- <http://www.grants.gov/web/grants/view-opportunity.html?oppld=282640>
- <http://www.grants.gov/web/grants/view-opportunity.html?oppld=282715>
- <http://www.grants.gov/web/grants/view-opportunity.html?oppld=282612>
- https://www.fbo.gov/index?s=opportunity&mode=form&id=7bd801a122e7294ac7dca13444056f1b&tab=core&_cview=0
- http://www.grants.gov/web/grants/view-opportunity.html?oppld=283105&utm_campaign=hrsa&utm_medium=email&utm_source=govdelivery
- <http://www.grants.gov/web/grants/view-opportunity.html?oppld=282880>

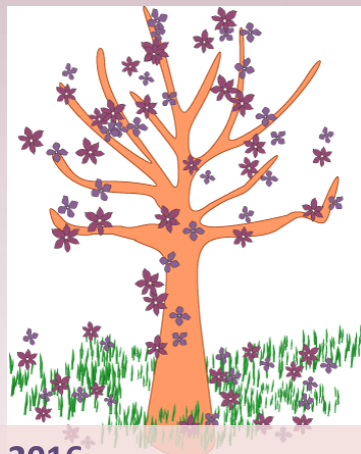
Private Funding Opportunities

- <http://www.nln.org/giving/overview/foundation-programs/foundation-for-nursing-education-scholarship-awards>
- <http://www.childrensprize.org/>

Baylor Scott & White Health Nursing Research Contacts

Susan Houston, PhD, RN, FAAN, NEA-BC
Director of Baylor Scott & White Health
Nursing Research – North Texas
Corporate Office of the CNC
2001 Bryan St. Ste. 600
Dallas, TX 75201
Cell: 972-272-9012
Email: Susan.Houston@BSWHealth.org

Phyllis Tipton, PhD, RN
Research Associate
Nursing Professional Development
Baylor Scott & White Health- Central Texas
MS-26-A431
2401 S. 31st St.
Temple, TX 76508
Ph: 254-724-4764
Fax: 254-724-4166
Email: Phtipton@BSWHealth.org



Kristie Johnson
Administrative Assistant
Corporate Office of the CNC – North Texas
2001 Bryan St. Ste. 600
Dallas, TX 75201
Ph: 214-820-9675
Fax: 214-820-4170
Email: Kristie.Johnson@BSWHealth.org